

Kiwanis of Kankakee: Fall Grants for Winter Warmth

This past November, the Community Foundation's Fall Grant Cycle awarded over \$44,000 to local nonprofit organizations. Kiwanis Club of Kankakee earned both a Community Stewardship Fund and Robert Dunn Charitable Trust Grant to bring warmth to families in need.

Each year Kiwanis Club of Kankakee holds their annual Shoe and Winter Warmth projects providing new shoes and jackets for students.

Children are selected by school social workers in the Kankakee, Bradley and Bourbonnais School Districts and identified as those who would most benefit from the programs.



Partnered with Shoe Carnival and Bombas, through the Shoe Project, 190 students were provided with a new pair of socks and shoes. Additionally, the Winter Warmth project provided 155 winter coats for students in need.

Volunteers throughout the County participate in these heart warming projects to assist Kiwanis members with finding the perfect fit for every student.

1/4 Cent for Mental Health for Kankakee County

The shortage of mental health services in Kankakee County has been a long-standing problem. Just about anyone trying to access services can tell you what a nightmare it is. More than 1,000 Kankakee County residents participated in recent countywide assessments completed by the Partnership for a Healthy Community and Kankakee County. Both assessments identified the need for increased mental health services as a high priority.

One of the main barriers to increasing services is the lack of funding for costs that are not met by private and public insurance, grants, and personal resources. Passage of a referendum to adopt a ¼ cent sales tax would provide local funds to address local situations. This would provide long-term solutions to critical service shortages throughout the county.

Funding decisions will be made by a seven-member Mental Health Board appointed by the County Board. Reliable resources mean stable foundations to create sustainable jobs and programs in the mental health field. A sales tax shares the costs with everyone – even those who do not live in our county but work and travel here.



Kankakee County for Mental Health



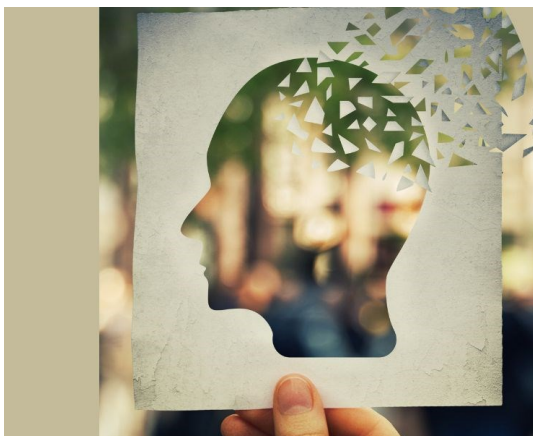
K3co4mentalhealth






Vote YES April 4th

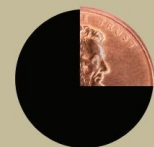
A ¼ cent sales tax would mean paying one cent more on a \$4 sandwich or beverage, or 25 cents more on a \$100 non-exempt purchase. Groceries, prescription drugs, and motorized vehicles are examples of purchases which would be exempt from this tax.

This problem is not going away. It is only getting more urgent. Kankakee County voters now have the opportunity to decide if they are willing to adopt a ¼ cent sales tax to create local, long-term solutions to chronic gaps in our mental health system of care.



1/4 cent for Mental Health

-  LOCAL FUNDING
-  LOCAL CONTROL
-  LONG-TERM SOLUTIONS
-  EVERYONE CONTRIBUTES



1/4 cent = 1 penny
for every \$4 spent

Nonprofit Coffee Talk

Partnered with Kankakee County Chamber of Commerce and presenting sponsor Ascension St. Mary's Hospital, our Nonprofit Coffee Talk's have been held quarterly for nonprofit leaders to network, connect and collaborate. Our January Coffee Talk was held at the Grief Center in Bourbonnais.

Numerous partnerships have formed through connecting at these events and we look forward to bringing our community partners together through these simple yet effective meetings.

Our next Coffee Talk is scheduled for June 21, 2023 . Register at www.kankakeecountychamber.com.



Lunch & Learn

In efforts to support our nonprofit partners, the Community Foundation has focused on bringing free to low cost education to nonprofits centered around the most asked for capacity building topics. The latest Lunch and Learn was presented on Advocacy vs. Lobbying for nonprofit organizations featuring speakers Holly Ambuehl and Alec Lopata from Forefront. Subscribe to our Eblast newsletter to receive information on our next Lunch and Learn.

Forefront Policy Team*

Holly Ambuehl, Director of Policy and Government Affairs

- Senate Staff (Massachusetts), Senior Policy Advisor in Governor's Office and House (Arizona), VP at United Way McLean County, Regional organizer for Illinois Partners for Human Service (Central IL), Chair of private health care trust (Bloomington/Normal), Nonprofit/Higher Ed Consultant

Alec Lopata, Policy and Government Affairs Coordinator

- Philanthropic consultant focused on public private partnerships, Dunn Fellow on Budget and Economy team in Gov. Pritzker's Office



Forefront

* Hoping to grow ©

Be *intentional*

"Living with intention means saying **no** to the things that aren't important so we can say **yes** to what matters most."

Intentional philanthropy is critical in a downturn. Community needs tend to rise during uncertain economic times. Building a budget for charitable donations helps you lead intentionally through your charitable gifting, making the most meaningful impact for you and the nonprofits you support.



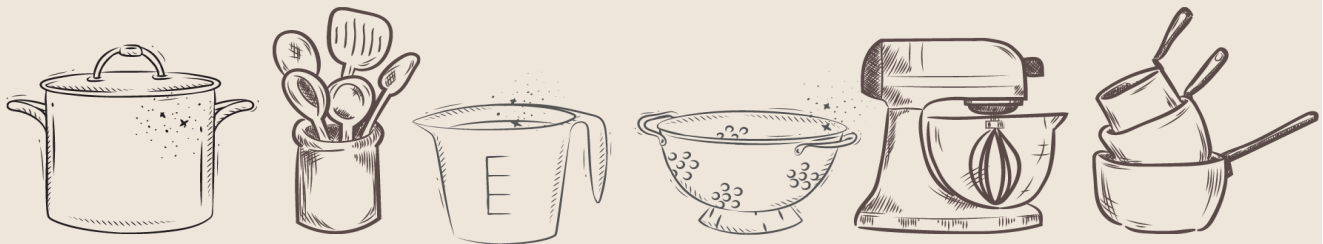
LEARN MORE

Save the Date

5 . 2 5 . 2 3

A N N U A L L U N C H E O N

COMMUNITY FOUNDATION OF KANKAKEE RIVER VALLEY




Save the date for our 2023 Annual Luncheon, held this year at the Kankakee Country Club.
We can't wait to share what we've **cooked up** this past year!

Board of Directors

Jeff Williamson, Chair	Nina Epstein
Jake Lee, Chair Elect	Walter "Chip" Hasselbring III
Nick Bufford, Secretary	Rende Langlois Jr
Beverly Hood, Treasurer	Angela Morrey
Nick Allen	Michael Pueschell
Alice Argyelan	Kerstin Rust
Arlene Bartolini	Karin Sailor



 701 S. Harrison Ave., Kankakee, IL 60901

 815-939-1611

 info@cfkrv.org

 www.cfkrv.org



Excellence. Accountability. Impact.™



(© 4/23, Community Foundation of Kankakee River Valley)